

REPORT OF CHIEF ENGINEER
HUDSON RIVER - BLACK RIVER REGULATING DISTRICT
BOARD MEETING
JUNE 8, 2021 – MAYFIELD, NEW YORK

HUDSON RIVER AREA - MAY SUMMARY

Reservoir Operation

Great Sacandaga Lake

The May average daily release from the Sacandaga Reservoir (Great Sacandaga Lake) was approximately 400 cubic feet per second (cfs). The Upper Hudson / Sacandaga River Offer of Settlement target elevation for May 31 is 767.12 feet (ft). The release of water from Great Sacandaga Lake was consistent with the Upper Hudson/Sacandaga River Offer of Settlement.

Table 1.0 - *Great Sacandaga Lake Elevation and Release*

Date	Daily Average Elevation (ft,NAVD) ⁽⁴⁾	Deviation (ft) (1)		Release (cfs)	
		From Average	From Offer of Settlement	Conklingville Dam	E.J. West (2) Hydro Plant
Apr. 30	762.85	-2.14	-0.77	0	383
May 31	765.5 (e)	-1.1 (e)	-1.6 (e)	0	230 (e)

Notes: ⁽¹⁾ Difference between current reservoir elevation and historic average or Level 3

⁽²⁾ Release established by Regulating District

⁽³⁾ "(e)" represents estimated value

⁽⁴⁾ "NAVD" is National Geodetic Vertical Datum

Indian Lake Reservoir

The May average daily release from Indian Lake was approximately 180 cfs.

Table 2.0 - *Indian Lake Reservoir Elevation and Release*

Date	Daily Average Elevation (1) (ft, NAVD)	Deviation (ft)		Release (cfs)
		From Average	From Target	
Apr. 30	1,649.40	-0.59	-1.23	61
May 31	1,649.9 (e)	+0.1 (e)	+0.2 (e)	102 (e)

Notes: ⁽¹⁾ Local datum = NAVD elevation + 1617.63ft; spillway crest = 1651.01ft (33.38ft)

⁽²⁾ "(e)" represents estimated value

HUDSON RIVER AREA - MAY SUMMARY- continued

River Flow

Hudson River flow, downstream of the confluence with the Sacandaga River, was approximately 1,850 cfs on May 23 and approximately 5,200 cfs below the historic average flow.

Table 3.0 - *Sacandaga, Indian, and Hudson River Flow*

River	Monthly Average Flow (cfs)	Historic Average Flow (2) (cfs)
Sacandaga at Hope	860 (e)	1,730
Sacandaga at Stewarts Bridge	400 (e)	2,410
Indian at Indian Lake Dam	182 (e)	328
Hudson at Hadley (1)	3,320 (e)	5,210

Notes: (1) Above confluence with Sacandaga River
 (2) Based on USGS records
 (3) "(e)" represents estimated value

Precipitation

Monthly total precipitation measured 23%, 45%, and 32% historic average at Indian Lake, Mayfield, and Conklingville, respectively, as of May 23

Table 4.0 - *Hudson River Basin Precipitation - as of May 23*

Station	Monthly Total (inch)	Historic Average (inch)
Indian Lake	0.88	3.89
Mayfield	1.77	3.92
Conklingville	1.16	3.60

HUDSON RIVER AREA - MAY SUMMARY- continued

Operation Overview

Precipitation during the month of May was below normal across the Great Sacandaga Lake watershed and the Indian Lake watershed. The monthly inflow to Great Sacandaga Lake and Indian Lake reservoir was approximately 46% and 49% of historic average, respectively. Monthly release of water from Great Sacandaga Lake and Indian Lake measured 16% and 46% of historic average, respectively.

Great Sacandaga Lake Operation

Great Sacandaga Lake operation summary report for the period May 1, 2021 through May 24, 2021 is attached. This report includes projected and forecast values for dates after May 24, 2021.

Hudson River Area Staff Activities

Staff completed routine maintenance and operations activities during the month.

A summary of District staff activities and work projects at the dam facilities is attached in the Administrator's Report.

BLACK RIVER AREA – MAY SUMMARY

Reservoir Operations

Stillwater Reservoir

The May average daily release from Stillwater Reservoir was approximately 90 cfs. The maximum discharge for the month was 300 cfs.

Table 1.0 - *Stillwater Reservoir Elevation and Release*

Date	Daily Average Elevation (ft, NAVD)	Deviation from Average Elevation (ft) (1)	Release (cfs)
Apr. 30	1,675.33	-1.85	81
May 31	1,678.2 (e)	-0.3 (e)	300 (e)

Notes: (1) Difference between current reservoir elevation and historic average
(2) "(e)" represents estimated value

Sixth Lake Reservoir

The May average daily release from Sixth Lake Reservoir was approximately 12 cfs.

Table 2.0 - *Sixth Lake Reservoir Elevation and Release*

Date	Elevation (1) (ft, NAVD)	Deviation from Average Elevation (2) (ft)	Release (cfs)
Apr. 30	1,784.62	-0.16	5
May 31	1,785.9 (e)	+0.1 (e)	10 (e)

Notes: (1) Local datum = USGS datum
(2) Difference between current reservoir elevation and historic average.
(3) "(e)" represents estimated value

Old Forge Reservoir

The May average daily release from Old Forge Reservoir was approximately 22 cfs.

Table 3.0 - *Old Forge Reservoir Elevation and Release*

Date	Elevation (1) (ft, NAVD)	Deviation from Average Elevation (2) (ft)	Release (cfs)
Apr. 30	1,706.09	+0.31	4
May 31	1,706.8 (e)	0.0 (e)	24 (e)

Notes: (1) Local Datum = USGS elevation
(2) Difference between current reservoir elevation and historic average.
(3) "(e)" represents estimated value

BLACK RIVER AREA - MAY SUMMARY - continued

River Flow

The average daily Black River flow, as measured at the Watertown gauge, was approximately 1,380 cfs on May 23

Table 4.0 - *Moose, Independence, Beaver, and Black River Flow*

River	Monthly Average Flow (cfs)	Historic Average Flow (1) (cfs)
Moose at McKeever	918 (e)	1,281
Beaver at Croghan	340 (e)	722
Black at Watertown	3,530 (e)	5,360

Notes: ⁽¹⁾ Based on USGS records
⁽²⁾ "(e)" represents estimated value
⁽³⁾ Stage and flow affected by ice in river

Precipitation

Monthly total precipitation measured 46%, 47%, 32% of historic average at Stillwater, Old Forge, and Sixth Lake, respectively, as of May 23.

Table 5.0 - *Black River Basin Precipitation - as of May 23*

Station	Monthly Total (inch)	Historic Average (inch)
Stillwater	2.06	4.46
Old Forge	2.16	4.57
Sixth Lake	1.28	4.00

BLACK RIVER AREA - MAY SUMMARY - continued

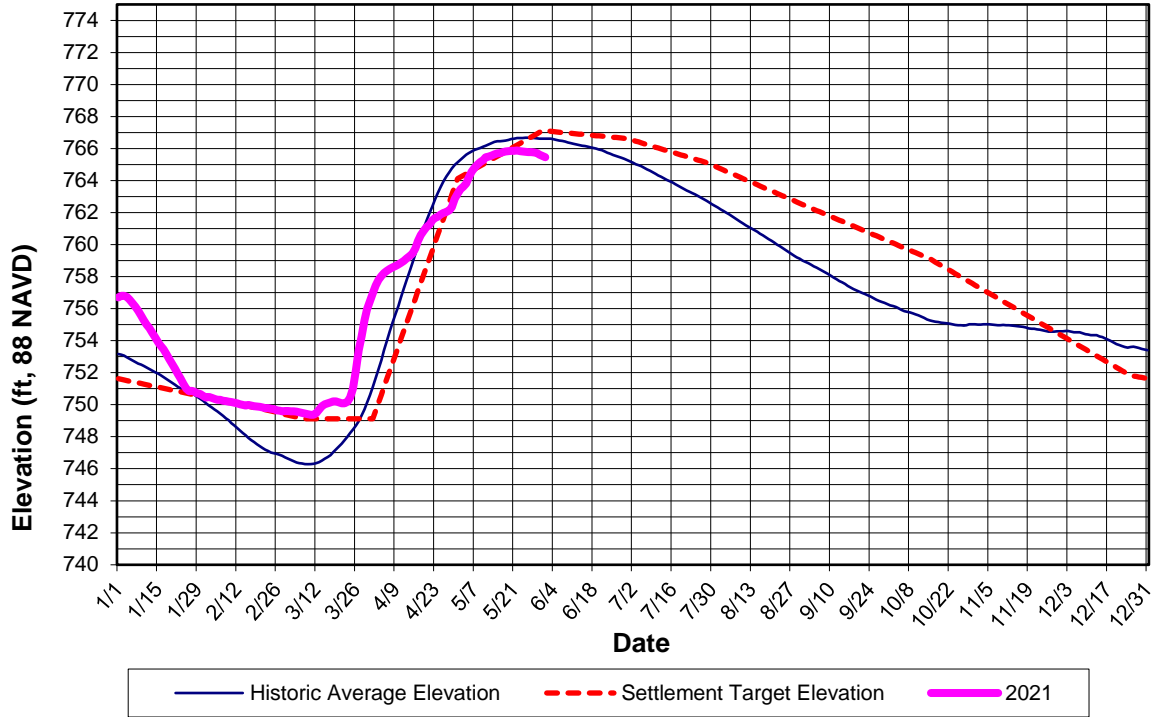
Operation Overview

Precipitation in the month of May was below average at Stillwater and below average at Sixth Lake and Old Forge. The monthly inflow to Stillwater Reservoir was approximately 62% of historic average. The inflow to Sixth Lake and Old Forge Reservoir totaled 0.06 and 0.13 billion cubic feet, respectively, in May. Release of water from Stillwater Reservoir averaged 18% of historic discharge.

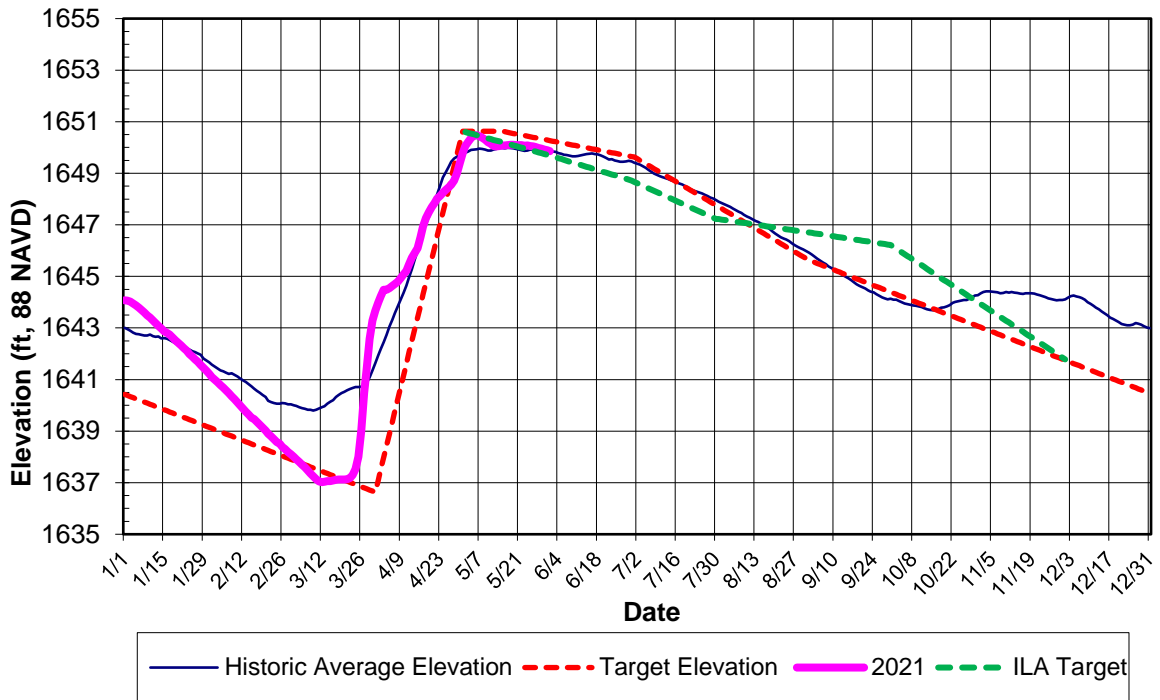
Black River Area Staff Activities

A summary of District staff activities and work projects at the dam facilities is attached in the Administrator's Report.

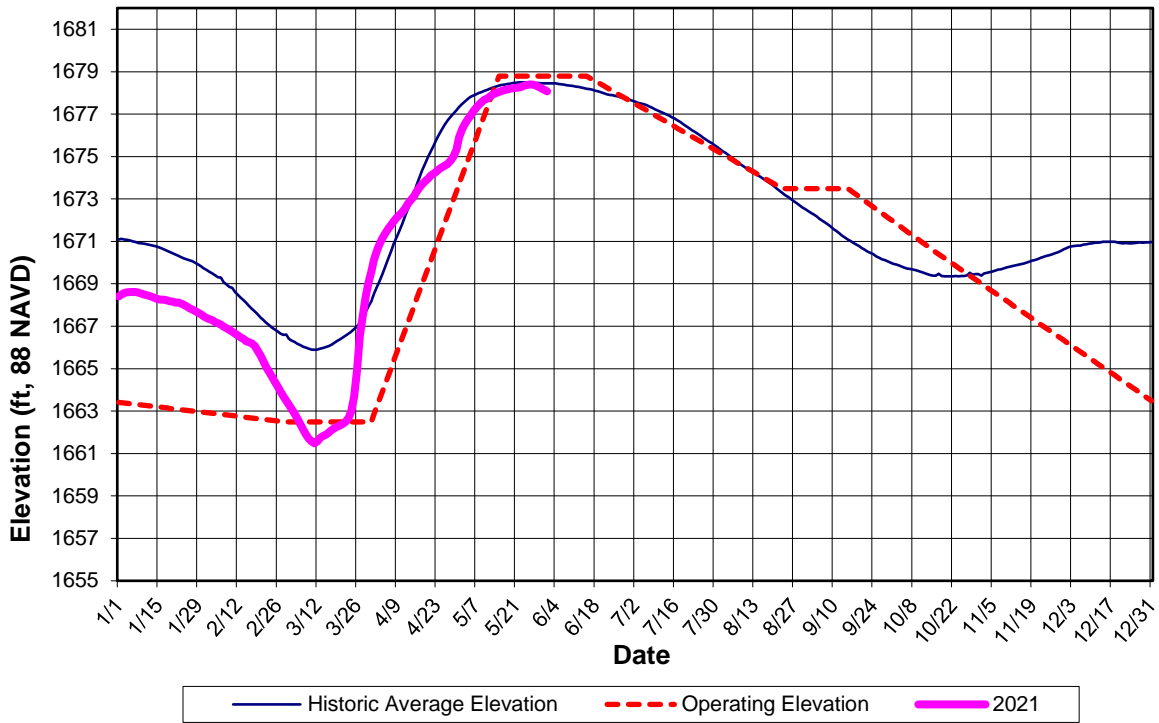
Great Sacandaga Lake 2021 Reservoir Elevation



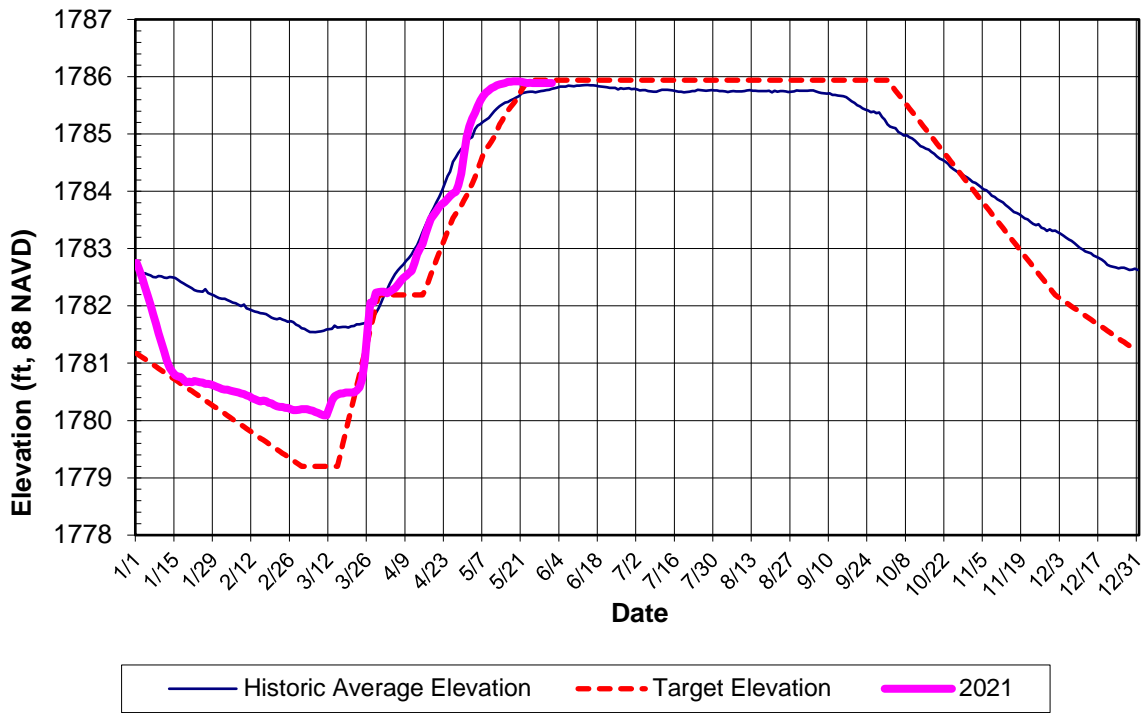
Indian Lake 2021 Reservoir Elevation



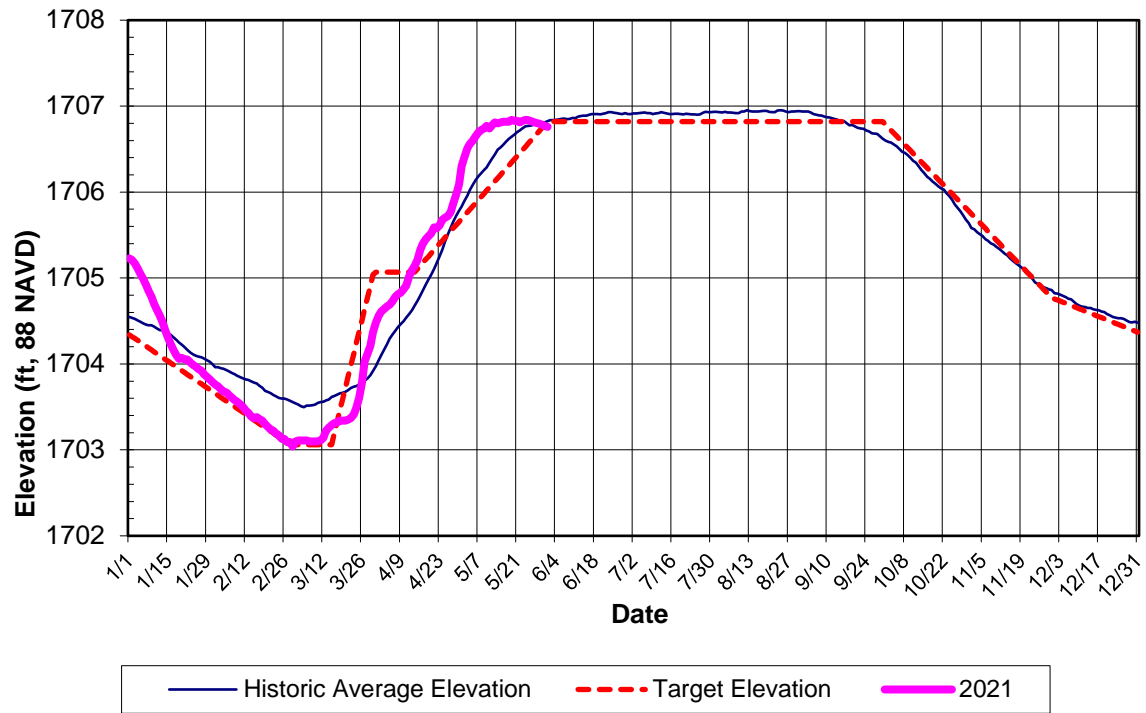
Stillwater Reservoir 2021 Reservoir Elevation



Sixth Lake 2021 Reservoir Elevation



Old Forge 2021 Reservoir Elevation



SACANDAGA RESERVOIR ELEVATION CALCULATOR

Datum: **1988 NAVD**

Settlement Parameters	
Date	5/25/2021
Target Elevation	766.52
Actual "Level"	3.02
"Level 2.5 threshold"	
"Level 1.2 threshold"	756.94
Hudson River Target	
	Elevation Level
Maximum Flow (cfs)	8000 7540
Minimum Flow (cfs)	n/a 2040
Min. Rec/Rafting Hours (hrs)	#VALUE!

BROOKFIELD HYDRO CONTROL CENTER: 877-816-7466

Whitewater (hrs)	Daily Avg (cfs)
3	806
4	958
5	1110
6	1263
7	1415
8	1567

* 4000 cfs/hr + base flow 350 cfs

Daily Conditions	
Date	5/25/2021
Day of Year	5259
Starting Elevation (ft)	765.81
Average Elevation	765.79
Flow Below Hadley (cfs)	1980
Today's Release	900
Tomorrow's Release	700

Justin St. John 518-743-2004 (w)
 Jonathan Norris 315-396-8194 (cell)
 Jonathan Norris 518-743-2094

Dan McCarty 744-2067 Eric Johnson 863-8791
 Piezometers 518-696-5807

ACTUAL High Value
 SCHEDULED Low Value
 ESTIMATED Instant. (min + rafting)
 TO BE CHANGED
 Spillway Crest 770.12 ft 88 NAVD

Starting Date 12:00 AM	Starting Elevation	Net Average Inflow	Sacandaga River Flow					Settlement Level	Hudson at Hadley	Hudson River Below Confluence	Hudson River Target Flow			Ending Elevation	Ending Date 12:00 AM	Daily Average Elevation	Settlement Target Elevation	Historic Daily Average Elev.
			E.J. West	Valves	Spillway	Average Release	Maximum (Table F - Elev.)				Minimum (Table C - Level)	Maximum (Table D - Elev.)	Maximum (Table E - Level)					
5/1/2021	763.05	3200	381	0	0	381	4000	2.76	8120	8501	1885	8000	7500	763.27	5/2/2021	763.16	764.12	765.15
5/2/2021	763.27	3900	380	0	0	380	4000	2.76	8040	8420	1885	8000	7500	763.54	5/3/2021	763.41	764.22	765.32
5/3/2021	763.54	2700	380	0	0	380	4000	2.77	7020	7400	1885	8000	7500	763.72	5/4/2021	763.63	764.32	765.48
5/4/2021	763.72	3500	384	0	0	384	4000	2.77	6110	6494	1885	8000	7500	763.96	5/5/2021	763.84	764.42	765.63
5/5/2021	763.96	5900	386	0	0	386	4000	2.77	5880	6266	1890	8000	7500	764.39	5/6/2021	764.18	764.52	765.74
5/6/2021	764.39	4200	385	0	0	385	4187	2.77	6280	6665	1890	8000	7500	764.68	5/7/2021	764.54	764.62	765.84
5/7/2021	764.68	3000	382	0	0	382	4280	3.01	6010	6392	2020	8000	7520	764.88	5/8/2021	764.78	764.72	765.92
5/8/2021	764.88	2600	381	0	0	381	4373	3.02	5520	5901	2040	8000	7540	765.05	5/9/2021	764.97	764.82	765.98
5/9/2021	765.05	2600	380	0	0	380	4467	3.03	4700	5080	2060	8000	7560	765.22	5/10/2021	765.14	764.92	766.05
5/10/2021	765.22	2000	380	0	0	380	4513	3.04	4660	5040	2080	8000	7580	765.34	5/11/2021	765.28	765.02	766.11
5/11/2021	765.34	2000	380	0	0	380	4560	3.04	4230	4610	2080	8000	7580	765.46	5/12/2021	765.40	765.12	766.18
5/12/2021	765.46	1200	380	0	0	380	4607	3.05	3740	4120	2080	8000	7580	765.52	5/13/2021	765.49	765.22	766.25
5/13/2021	765.52	1200	380	0	0	380	4653	3.03	3290	3670	2060	8000	7560	765.58	5/14/2021	765.55	765.32	766.34
5/14/2021	765.58	1300	380	0	0	380	4653	3.02	2980	3360	2040	8000	7540	765.65	5/15/2021	765.62	765.42	766.41
5/15/2021	765.65	1300	380	0	0	380	4700	3.02	2510	2890	2040	8000	7540	765.72	5/16/2021	765.69	765.52	766.44
5/16/2021	765.72	800	380	0	0	380	4747	3.01	2390	2770	2020	8000	7520	765.75	5/17/2021	765.74	765.62	766.46
5/17/2021	765.75	900	380	0	0	380	4747	3.01	2240	2620	2020	8000	7520	765.79	5/18/2021	765.77	765.72	766.47
5/18/2021	765.79	900	436	0	0	436	4747	2.98	1880	2316	1990	8000	7500	765.82	5/19/2021	765.81	765.82	766.50
5/19/2021	765.82	600	395	0	0	395	4793	2.94	1780	2175	1971	8000	7500	765.83	5/20/2021	765.83	765.92	766.54
5/20/2021	765.83	700	529	0	0	529	4793	2.92	1560	2089	1962	8000	7500	765.84	5/21/2021	765.84	766.02	766.59
5/21/2021	765.84	800	399	0	0	399	4793	2.88	1560	1959	1938	8000	7500	765.87	5/22/2021	765.86	766.12	766.62
5/22/2021	765.87	700	732	0	0	732	4793	2.83	1350	2082	1918	8000	7500	765.86	5/23/2021	765.87	766.22	766.65
5/23/2021	765.86	0	469	0	0	469	4793	2.78	1380	1849	1894	8000	7500	765.82	5/24/2021	765.84	766.32	766.65
5/24/2021	765.82	600	685	0	0	685	4747	2.74	1260	1945	1875	8000	7500	765.81	5/25/2021	765.82	766.42	766.66
5/25/2021	765.81	500	900	0	0	900	4747	2.70	1080	1980	1856	8000	7500	765.77	5/26/2021	765.79	766.52	766.68
5/26/2021	765.77	500	700	0	0	700	4747	2.63	1200	1900	1822	8000	7500	765.75	5/27/2021	765.76	766.62	766.68
5/27/2021	765.75	500	900	0	0	900	4747	2.57	1000	1900	1794	8000	7500	765.71	5/28/2021	765.73	766.72	766.67
5/28/2021	765.71	500	800	0	0	800	4700	2.51	1100	1900	1765	8000	7500	765.68	5/29/2021	765.70	766.82	766.65
5/29/2021	765.68	500	1567	0	0	1567	4700	2.45	1000	2567	1760	8000	7440	765.59	5/30/2021	765.64	766.92	766.63
5/30/2021	765.59	500	1567	0	0	1567	4653	2.39	1000	2567	1760	8000	7380	765.50	5/31/2021	765.55	767.02	766.63
5/31/2021	765.50	500	1567	0	0	1567	4607	2.32	1000	2567	1760	8000	7320	765.41	6/1/2021	765.46	767.12	766.62
6/1/2021	765.41	500	700	0	0	700	4560	2.26	1000	1700	1760	8000	7260	765.39	6/2/2021		767.09	766.62
6/6/2020	767.29	1000	800	0	0	800	5487	3.00	500	1300	2000	8000	7500	760.17	3/15/2019	#N/A	#N/A	

Signature: _____

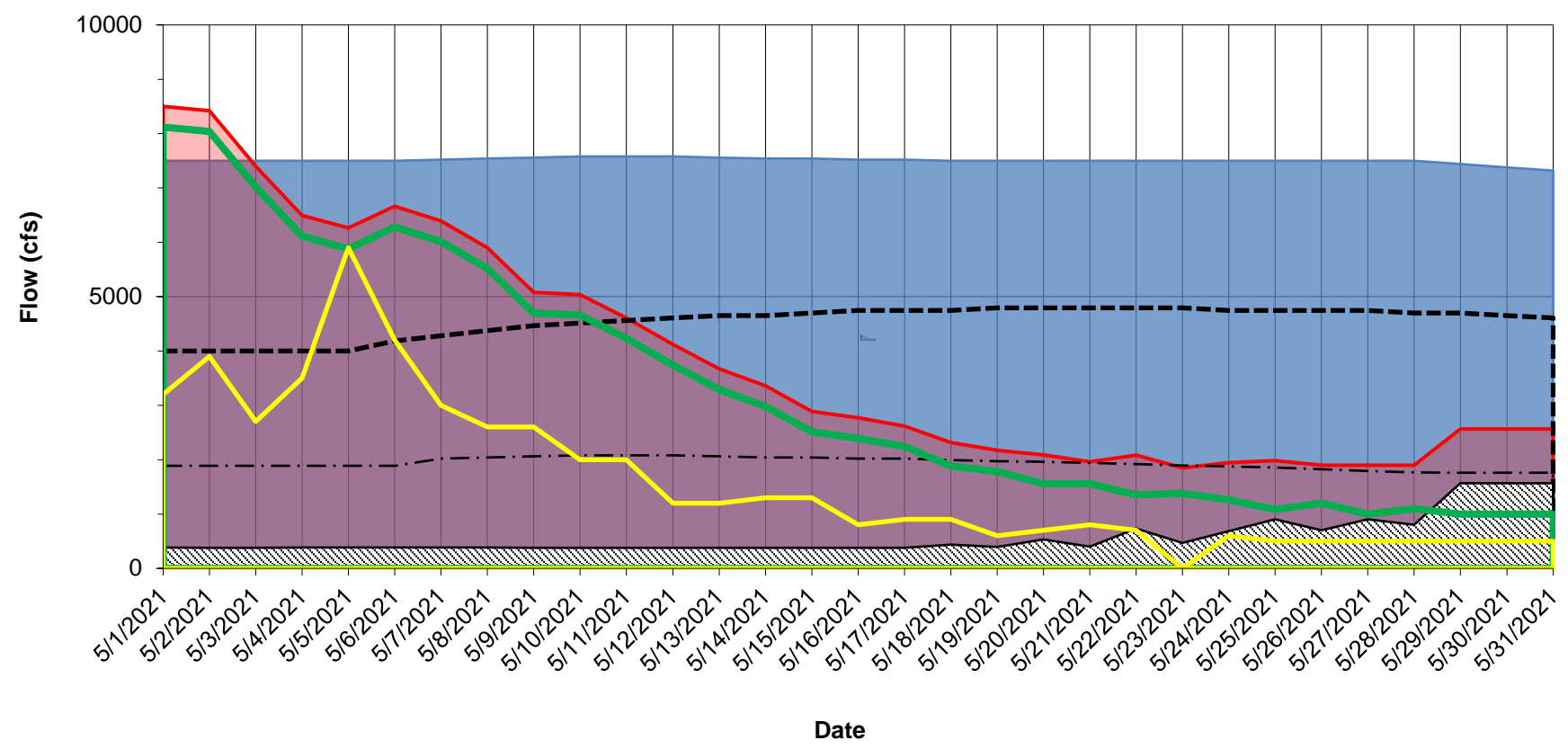
Date: _____

**GREAT SACANDAGA LAKE
RESERVOIR OPERATION SUMMARY**

Print Date: 5/25/2021
Period of Record: 5/1/2021 to 5/29/2021

Starting Date 12:00 AM	Daily Avg. Elevation	Net Average Inflow	Sacandaga River Flow Average Release		Maximum (Table F - Elev.)	Settlement Level	Hudson at Hadley	Hudson River Below Confluence	Hudson River Target Flow Minimum (Table B - Level)		Maximum (Table D & E)	Maximum Allowable Sacandaga
5/1/2021	763.16	3200	381	4000	2.76	8120	8501	1885	7500	4000		
5/2/2021	763.41	3900	380	4000	2.76	8040	8420	1885	7500	4000		
5/3/2021	763.63	2700	380	4000	2.77	7020	7400	1885	7500	4000		
5/4/2021	763.84	3500	384	4000	2.77	6110	6494	1885	7500	4000		
5/5/2021	764.18	5900	386	4000	2.77	5880	6266	1890	7500	4000		
5/6/2021	764.54	4200	385	4187	2.77	6280	6665	1890	7500	4093		
5/7/2021	764.78	3000	382	4280	3.01	6010	6392	2020	7520	4233		
5/8/2021	764.97	2600	381	4373	3.02	5520	5901	2040	7540	4327		
5/9/2021	765.14	2600	380	4467	3.03	4700	5080	2060	7560	4420		
5/10/2021	765.28	2000	380	4513	3.04	4660	5040	2080	7580	4513		
5/11/2021	765.40	2000	380	4560	3.04	4230	4610	2080	7580	4560		
5/12/2021	765.49	1200	380	4607	3.05	3740	4120	2080	7580	4607		
5/13/2021	765.55	1200	380	4653	3.03	3290	3670	2060	7560	4653		
5/14/2021	765.62	1300	380	4653	3.02	2980	3360	2040	7540	4653		
5/15/2021	765.69	1300	380	4700	3.02	2510	2890	2040	7540	4700		
5/16/2021	765.74	800	380	4747	3.01	2390	2770	2020	7520	4747		
5/17/2021	765.77	900	380	4747	3.01	2240	2620	2020	7520	4747		
5/18/2021	765.81	900	436	4747	2.98	1880	2316	1990	7500	4747		
5/19/2021	765.83	600	395	4793	2.94	1780	2175	1971	7500	4793		
5/20/2021	765.84	700	529	4793	2.92	1560	2089	1962	7500	4793		
5/21/2021	765.86	800	399	4793	2.88	1560	1959	1938	7500	4793		
5/22/2021	765.87	700	732	4793	2.83	1350	2082	1918	7500	4793		
5/23/2021	765.84	0	469	4793	2.78	1380	1849	1894	7500	4793		
5/24/2021	765.82	600	685	4747	2.74	1260	1945	1875	7500	4793		
5/25/2021	765.79	500	900	4747	2.70	1080	1980	1856	7500	4747		
5/26/2021	765.76	500	700	4747	2.63	1200	1900	1822	7500	4747		
5/27/2021	765.73	500	900	4747	2.57	1000	1900	1794	7500	4747		
5/28/2021	765.70	500	800	4700	2.51	1100	1900	1765	7500	4700		
5/29/2021	765.64	500	1567	4700	2.45	1000	2567	1760	7440	4700		
5/30/2021	765.55	500	1567	4653	2.39	1000	2567	1760	7380	4653		
5/31/2021	765.46	500	1567	4607	2.32	1000	2567	1760	7320	4607		

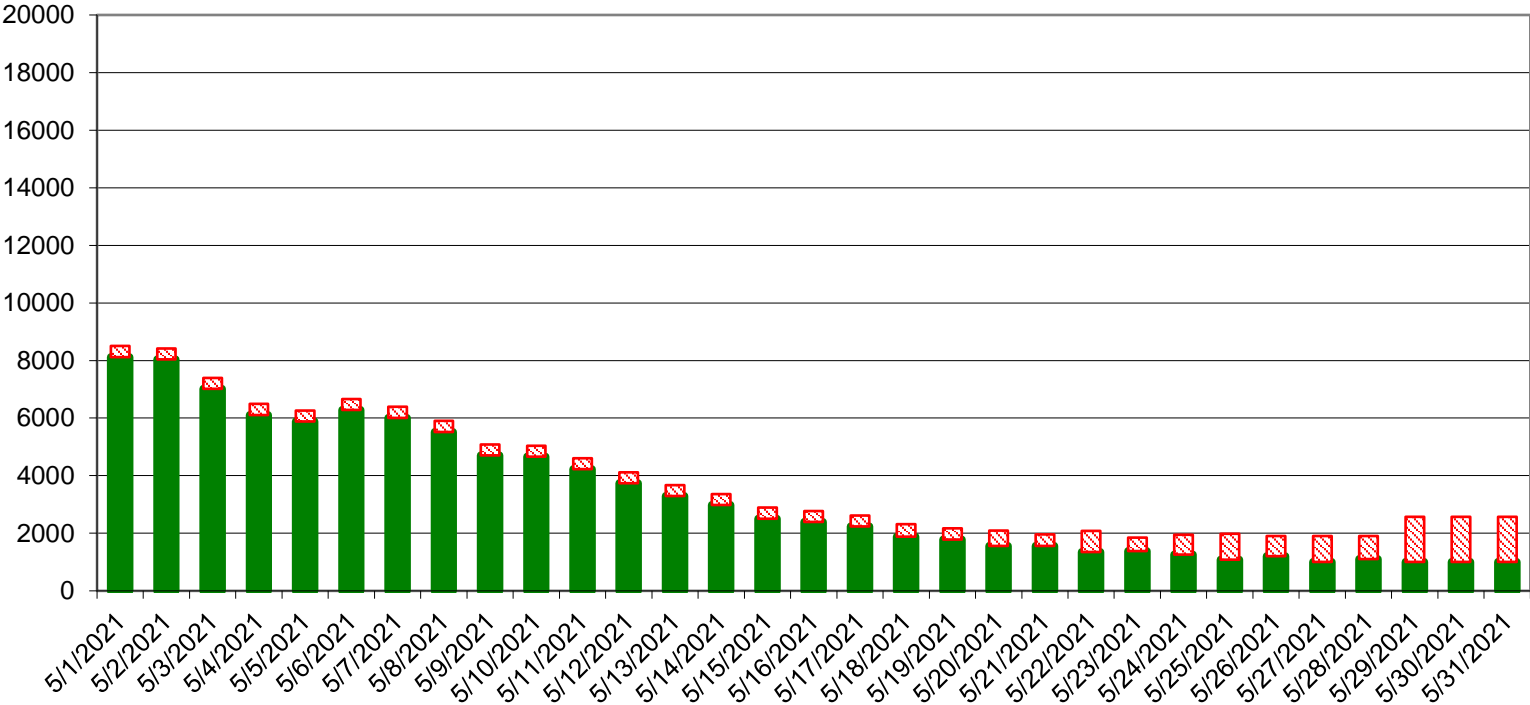
Great Sacandaga Lake Actual and Maximum Allowable Hudson River Flow Below Confluence



- | | |
|--|---|
| <ul style="list-style-type: none"> Maximum Allowable Hudson River Flow Below Confluence Hudson River Flow Below Confluence Maximum Allowable Sacandaga River Flow Minimum Allowable Hudson River Flow Below Confluence Great Sacandaga Lake Inflow | <ul style="list-style-type: none"> Hudson River at Hadley Sacandaga River Flow |
|--|---|

Great Sacandaga Lake GSL Release and Natural Hudson River Flow

Total Flow Below Confluence (cfs)



Date



STATE OF NEW YORK
HUDSON RIVER-BLACK RIVER REGULATING DISTRICT
SACANDAGA RESERVOIR / HUDSON RIVER REGULATION

Monthly Report for: April 2021

Day	Sacandaga Reservoir Elevation Average Daily	Sacandaga Reservoir Elevation Midnight	Sacandaga River Near Hope cfs	Reservoir Inflow Hope x 2.0025 cfs	Sacandaga River at Stewarts Bridge cfs	Hudson River at Hadley cfs	Regulated Hudson River below confluence cfs
1	756.97	756.72	3800	7610	417	8270	8687
2	757.44	757.25	3190	6388	415	7500	7915
3	757.80	757.61	2510	5026	413	6470	6883
4	758.05	757.92	2230	4466	412	5660	6072
5	758.22	758.16	1890	3785	1160	5060	6220
6	758.37	758.33	1650	3304	1040	4510	5550
7	758.48	758.40	1500	3004	840	4150	4990
8	758.58	758.47	1390	2783	985	3870	4855
9	758.67	758.62	1290	2583	1090	3560	4650
10	758.76	758.70	1190	2383	383	3410	3793
11	758.86	758.81	1110	2223	384	3510	3894
12	758.99	758.96	1270	2543	385	3780	4165
13	759.15	759.06	1420	2844	385	4490	4875
14	759.28	759.21	1220	2443	384	3950	4334
15	759.44	759.35	1340	2683	386	3590	3976
16	759.77	759.60	3560	7129	386	6050	6436
17	760.23	760.00	3380	6768	385	7560	7945
18	760.59	760.43	2660	5327	382	6810	7192
19	760.86	760.73	2220	4446	380	5970	6350
20	761.09	760.98	1800	3605	379	5360	5739
21	761.24	761.08	1690	3384	381	4950	5331
22	761.51	761.38	1650	3304	381	4640	5021
23	761.66	761.53	1410	2824	380	4150	4530
24	761.74	761.68	1320	2643	380	3860	4240
25	761.87	761.75	1190	2383	380	3860	4240
26	761.98	762.01	1070	2143	381	3600	3981
27	762.04	762.01	946	1894	381	3280	3661
28	762.14	762.01	1010	2023	381	3330	3711
29	762.33	762.22	2030	4065	382	4610	4992
30	762.85	762.40	3320	6648	383	6650	7033

AVERAGE 1880 3760 490 4880 5380

CHANGE IN STORAGE DURING THE MONTH 6.59 B.C.F.

 CHIEF ENGINEER

STATE OF NEW YORK
HUDSON RIVER-BLACK RIVER REGULATING DISTRICT
INDIAN LAKE RESERVOIR REGULATION

Monthly Report for: April, 2021

Day	Reservoir Elevation Average Daily	Reservoir Elevation Midnight	Net Reservoir Inflow cfs	Indian River at Indian Lake cfs	Hudson River at Newcomb cfs	Regulated Hudson River at North Creek cfs
1	1643.99	1643.85	681	150	1370	4250
2	1644.23	1644.12	563	150	1170	3410
3	1644.48	1644.32	386	150	887	2670
4	1644.48	1644.44	290	152	701	2230
5	1644.55	1644.51	290	152	575	1870
6	1644.63	1644.58	270	152	500	1720
7	1644.70	1644.64	329	152	456	1630
8	1644.79	1644.73	353	97	457	1600
9	1644.93	1644.87	371	56	537	1400
10	1645.08	1645.02	312	56	650	1670
11	1645.22	1645.15	332	57	708	1680
12	1645.46	1645.29	673	63	712	1950
13	1645.72	1645.61	492	59	632	2370
14	1645.91	1645.82	354	59	533	1870
15	1646.10	1645.97	712	63	490	1900
16	1646.52	1646.30	945	66	858	3590
17	1646.94	1646.74	875	63	1080	4380
18	1647.26	1647.13	623	61	881	3550
19	1647.49	1647.40	478	61	716	2750
20	1647.68	1647.61	331	60	612	2380
21	1647.85	1647.73	435	60	544	2020
22	1648.02	1647.91	247	60	484	1870
23	1648.12	1648.00	518	60	419	1520
24	1648.24	1648.22	247	60	400	1720
25	1648.36	1648.31	122	60	392	1650
26	1648.46	1648.35	414	60	372	1460
27	1648.55	1648.51	247	60	340	1430
28	1648.72	1648.61	584	60	336	1480
29	1649.00	1648.85	830	60	498	2580
30	1649.40	1649.19	1029	61	916	4330

AVERAGE 478 83 641 2298

CHANGE IN STORAGE DURING THE MONTH 1.024 B.C.F

 CHIEF ENGINEER

STATE OF NEW YORK
HUDSON RIVER-BLACK RIVER REGULATING DISTRICT
STILLWATER RESERVOIR / BLACK RIVER REGULATION

Monthly Report for: April 2021

Day	Stillwater Reservoir Elevation Average Daily	Stillwater Reservoir Elevation Midnight	Stillwater Reservoir Net Inflow cfs	Stillwater Reservoir Release cfs	Black River at Boonville cfs	Beaver River at Croghan cfs	Regulated Black River at Watertown cfs
1	1670.12	1669.84	1203	50	1690	504	14700
2	1670.55	1670.36	920	50	1370	691	11800
3	1670.89	1670.73	783	50	1110	530	10000
4	1671.16	1671.04	661	50	979	331	8330
5	1671.39	1671.29	616	79	911	246	6740
6	1671.60	1671.51	540	100	855	230	5500
7	1671.79	1671.69	515	100	810	208	4620
8	1671.95	1671.86	518	100	788	228	3920
9	1672.11	1672.03	481	100	740	264	3570
10	1672.25	1672.18	430	100	618	225	3420
11	1672.38	1672.31	430	100	523	218	3220
12	1672.57	1672.44	681	71	583	258	3230
13	1672.79	1672.68	558	50	737	581	3950
14	1672.96	1672.88	434	50	648	416	4540
15	1673.12	1673.03	552	50	578	344	4240
16	1673.33	1673.22	578	50	795	371	4150
17	1673.53	1673.42	578	50	868	431	4520
18	1673.70	1673.62	446	50	777	481	4830
19	1673.84	1673.77	446	50	670	438	4720
20	1673.95	1673.92	344	50	581	339	4180
21	1674.10	1674.03	407	50	578	269	3460
22	1674.19	1674.16	270	50	582	244	3280
23	1674.28	1674.24	380	50	540	256	3210
24	1674.40	1674.36	297	50	542	258	3210
25	1674.50	1674.45	270	50	529	239	3090
26	1674.58	1674.53	325	50	470	200	2810
27	1674.67	1674.63	352	50	452	204	2670
28	1674.81	1674.74	517	50	540	255	2700
29	1675.01	1674.91	656	94	908	559	3530
30	1675.33	1675.11	1625	81	1460	829	5490

AVERAGE 561 64 770 350 4920

CHANGE IN STORAGE DURING THE MONTH 1.29 B.C.F.

CHIEF ENGINEER

STATE OF NEW YORK
HUDSON RIVER-BLACK RIVER REGULATING DISTRICT
SIXTH LAKE RESERVOIR REGULATION

Monthly Report for: April, 2021

Day	Reservoir Elevation Average Daily	Reservoir Elevation Midnight	Net Reservoir Inflow cfs	Gate Opening (ft)		Reservoir Release (cfs)
				Gate A	Gate B	
1	1782.25	1782.25	78	1.17	1.17	89
2	1782.22	1782.22	70	1.17	1.17	67
3	1782.25	1782.23	41	1.17	1.17	30
4	1782.28	1782.26	41	1.17	1.17	30
5	1782.31	1782.29	32	0.00	0.08	13
6	1782.37	1782.34	28	0.00	0.08	3
7	1782.44	1782.41	25	0.00	0.08	3
8	1782.49	1782.47	21	0.00	0.08	3
9	1782.53	1782.52	14	0.00	0.08	3
10	1782.57	1782.55	17	0.00	0.08	3
11	1782.61	1782.59	25	0.00	0.08	3
12	1782.75	1782.65	72	0.00	0.08	4
13	1782.90	1782.84	47	0.00	0.08	4
14	1783.00	1782.96	26	0.00	0.08	4
15	1783.08	1783.02	58	0.00	0.08	4
16	1783.25	1783.17	61	0.00	0.08	4
17	1783.40	1783.33	54	0.00	0.08	4
18	1783.52	1783.47	36	0.00	0.08	4
19	1783.59	1783.56	29	0.00	0.08	4
20	1783.65	1783.63	26	0.00	0.08	4
21	1783.73	1783.69	30	0.00	0.08	5
22	1783.78	1783.76	16	0.00	0.08	5
23	1783.81	1783.79	23	0.00	0.08	5
24	1783.87	1783.84	27	0.00	0.08	5
25	1783.92	1783.90	23	0.00	0.08	5
26	1783.96	1783.95	12	0.00	0.08	5
27	1783.99	1783.97	34	0.00	0.08	5
28	1784.11	1784.05	66	0.00	0.08	5
29	1784.31	1784.22	78	0.00	0.08	5
30	1784.62	1784.42	153	0.00	0.08	5

AVERAGE 42 11

CHANGE IN STORAGE DURING THE MONTH 0.080 B.C.F

 CHIEF ENGINEER

STATE OF NEW YORK
HUDSON RIVER-BLACK RIVER REGULATING DISTRICT
OLD FORGE RESERVOIR REGULATION

Monthly Report for: April, 2021

Day	Reservoir Elevation Average Daily	Reservoir Elevation Midnight	Net Reservoir Inflow cfs	Gate Opening (ft)		Reservoir Release (cfs)
				Gate A	Gate B	
1	1704.56	1704.53	201	1.00	1.00	96
2	1704.61	1704.60	145	0.58	0.58	85
3	1704.64	1704.63	104	0.58	0.58	59
4	1704.67	1704.66	74	0.58	0.58	59
5	1704.69	1704.67	83	0.00	0.08	23
6	1704.73	1704.71	64	0.00	0.08	4
7	1704.78	1704.75	64	0.00	0.08	4
8	1704.81	1704.80	49	0.00	0.08	4
9	1704.83	1704.83	49	0.00	0.08	4
10	1704.87	1704.86	64	0.00	0.08	4
11	1704.91	1704.89	124	0.00	0.08	4
12	1705.02	1704.97	139	0.00	0.08	4
13	1705.09	1705.07	109	0.00	0.08	4
14	1705.14	1705.13	49	0.00	0.08	4
15	1705.21	1705.16	154	0.00	0.08	4
16	1705.33	1705.27	139	0.00	0.08	4
17	1705.40	1705.36	124	0.00	0.08	4
18	1705.45	1705.43	94	0.00	0.08	4
19	1705.49	1705.49	49	0.00	0.08	4
20	1705.52	1705.53	49	0.00	0.08	4
21	1705.59	1705.56	64	0.00	0.08	4
22	1705.58	1705.60	19	0.00	0.08	4
23	1705.61	1705.61	109	0.00	0.08	4
24	1705.68	1705.67	64	0.00	0.08	4
25	1705.70	1705.71	34	0.00	0.08	4
26	1705.72	1705.73	34	0.00	0.08	4
27	1705.77	1705.75	124	0.00	0.08	4
28	1705.87	1705.84	154	0.00	0.08	4
29	1705.97	1705.93	124	0.00	0.08	4
30	1706.09	1706.02	332	0.00	0.08	4

AVERAGE 100 14

CHANGE IN STORAGE DURING THE MONTH 0.222 B.C.F

 CHIEF ENGINEER

STATE OF NEW YORK
 HUDSON RIVER-BLACK RIVER REGULATING DISTRICT
SACANDAGA RESERVOIR OPERATION
 FOR WEEK ENDING: May 1, 2021

DATE	SACANDAGA RESERVOIR			HUDSON RIVER FLOW		
	WATER SURFACE ELEV. 12 A.M.	TOTAL STORAGE B.C.F. ⁽¹⁾	PERIODS OF RELEASE	RELEASE AVG. DAILY C.F.S.*	HADLEY AVG. DAILY C.F.S.	SPIER FALLS AVG. DAILY C.F.S.
Saturday 24	761.68	28.30	12 AM - Mid	380	3,880	4,260
Sunday 25	761.75	28.38	12 AM - Mid	380	3,860	4,240
Monday 26	762.01	28.66	12 AM - Mid	381	3,600	3,981
Tuesday 27	762.01	28.66	12 AM - Mid	381	3,280	3,661
Wednesday 28	762.01	28.66	12 AM - Mid	381	3,330	3,711
Thursday 29	762.22	28.88	12 AM - Mid	382	4,610	4,992
Friday 30	762.49	29.17	12 AM - Mid	383	6,650	7,033
Saturday 1	763.04	29.77	12 AM - Mid	381	8,120	8,501
CHANGE IN STORAGE DURING THE WEEK		1.46	* SACANDAGA RIVER AT STEWARTS BRIDGE INCLUDES 350 CFS MINIMUM CONTINUOUS RELEASE			

ELEVATIONS AND CAPACITIES ON THIS DATE FOR THE PAST TEN YEARS

NO.	YEAR	ELEV.	CAPACITY	NO.	YEAR	ELEV.	CAPACITY
1	2019	769.24	36.70	6	2018	764.35	31.20
2	2017	768.54	35.90	7	2013	763.83	30.63
3	2014	767.15	34.31	8	2021	763.04	29.77
4	2020	766.45	33.52	9	2015	762.68	29.38
5	2016	764.70	31.58	10	2012	760.84	27.41

CAPACITY AT SPILLWAY CREST (EL 770.12) 37.72 B.C.F.
 CAPACITY AT LOW FLOW LINE (EL 734.12) 4.60 B.C.F.

(1) Includes dead storage below El. 734.12 ft.
 Datum: NAVD 88

 CHIEF ENGINEER

STATE OF NEW YORK
 HUDSON RIVER-BLACK RIVER REGULATING DISTRICT
SACANDAGA RESERVOIR OPERATION
 FOR WEEK ENDING: May 8, 2021

DATE	SACANDAGA RESERVOIR			HUDSON RIVER FLOW		
	WATER SURFACE ELEV. 12 A.M.	TOTAL STORAGE B.C.F. ⁽¹⁾	PERIODS OF RELEASE	RELEASE AVG. DAILY C.F.S.*	HADLEY AVG. DAILY C.F.S.	SPIER FALLS AVG. DAILY C.F.S.
Saturday 1	763.04	29.77	12 AM - Mid	381	8,120	8,501
Sunday 2	763.32	30.07	12 AM - Mid	380	8,040	8,420
Monday 3	763.52	30.29	12 AM - Mid	555	7,020	7,575
Tuesday 4	763.71	30.50	12 AM - Mid	384	6,110	6,494
Wednesday 5	763.93	30.74	12 AM - Mid	386	5,880	6,266
Thursday 6	764.37	31.22	12 AM - Mid	385	6,280	6,665
Friday 7	764.66	31.54	12 AM - Mid	382	6,010	6,392
Saturday 8	764.88	31.78	12 AM - Mid	381	5,520	5,901
CHANGE IN STORAGE DURING THE WEEK		2.01	* SACANDAGA RIVER AT STEWARTS BRIDGE INCLUDES 350 CFS MINIMUM CONTINUOUS RELEASE			

ELEVATIONS AND CAPACITIES ON THIS DATE FOR THE PAST TEN YEARS

NO.	YEAR	ELEV.	CAPACITY	NO.	YEAR	ELEV.	CAPACITY
1	2017	769.59	37.11	6	2016	765.73	32.72
2	2014	768.77	36.16	7	2021	764.88	31.78
3	2019	767.31	34.49	8	2013	764.43	31.29
4	2020	766.76	33.87	9	2015	763.05	29.78
5	2018	766.32	33.38	10	2012	762.48	29.16

CAPACITY AT SPILLWAY CREST (EL 770.12) 37.72 B.C.F.
 CAPACITY AT LOW FLOW LINE (EL 734.12) 4.60 B.C.F.

(1) Includes dead storage below El. 734.12 ft.
 Datum: NAVD 88

 CHIEF ENGINEER

STATE OF NEW YORK
 HUDSON RIVER-BLACK RIVER REGULATING DISTRICT
SACANDAGA RESERVOIR OPERATION
 FOR WEEK ENDING: May 15, 2021

DATE	SACANDAGA RESERVOIR			HUDSON RIVER FLOW		
	WATER SURFACE ELEV. 12 A.M.	TOTAL STORAGE B.C.F. ⁽¹⁾	PERIODS OF RELEASE	RELEASE AVG. DAILY C.F.S.*	HADLEY AVG. DAILY C.F.S.	SPIER FALLS AVG. DAILY C.F.S.
Saturday 8	764.88	31.78	12 AM - Mid	381	5,520	5,901
Sunday 9	765.03	31.95	12 AM - Mid	380	5,070	5,450
Monday 10	765.17	32.10	12 AM - Mid	380	4,660	5,040
Tuesday 11	765.32	32.27	12 AM - Mid	380	4,230	4,610
Wednesday 12	765.51	32.48	12 AM - Mid	380	3,740	4,120
Thursday 13	765.51	32.48	12 AM - Mid	380	3,290	3,670
Friday 14	765.58	32.56	12 AM - Mid	380	2,980	3,360
Saturday 15	765.66	32.64	12 AM - Mid	380	2,510	2,890
CHANGE IN STORAGE DURING THE WEEK		0.86	* SACANDAGA RIVER AT STEWARTS BRIDGE INCLUDES 350 CFS MINIMUM CONTINUOUS RELEASE			

ELEVATIONS AND CAPACITIES ON THIS DATE FOR THE PAST TEN YEARS

NO.	YEAR	ELEV.	CAPACITY	NO.	YEAR	ELEV.	CAPACITY
1	2019	769.33	36.81	6	2020	766.07	33.10
2	2014	767.98	35.26	7	2021	765.66	32.64
3	2017	767.32	34.50	8	2012	765.08	32.00
4	2018	766.46	33.54	9	2013	764.99	31.90
5	2016	766.39	33.46	10	2015	763.57	30.35

CAPACITY AT SPILLWAY CREST (EL 770.12) 37.72 B.C.F.
 CAPACITY AT LOW FLOW LINE (EL 734.12) 4.60 B.C.F.

(1) Includes dead storage below El. 734.12 ft.
 Datum: NAVD 88

 CHIEF ENGINEER

STATE OF NEW YORK
 HUDSON RIVER-BLACK RIVER REGULATING DISTRICT
SACANDAGA RESERVOIR OPERATION
 FOR WEEK ENDING: May 22, 2021

DATE	SACANDAGA RESERVOIR			HUDSON RIVER FLOW		
	WATER SURFACE ELEV. 12 A.M.	TOTAL STORAGE B.C.F. ⁽¹⁾	PERIODS OF RELEASE	RELEASE AVG. DAILY C.F.S.*	HADLEY AVG. DAILY C.F.S.	SPIER FALLS AVG. DAILY C.F.S.
Saturday 15	765.66	32.64	12 AM - Mid	380	2,510	2,890
Sunday 16	765.75	32.74	12 AM - Mid	380	2,390	2,770
Monday 17	765.80	32.80	12 AM - Mid	380	2,240	2,620
Tuesday 18	765.77	32.77	12 AM - Mid	436	1,880	2,316
Wednesday 19	765.86	32.87	12 AM - Mid	395	1,780	2,175
Thursday 20	765.82	32.82	12 AM - Mid	529	1,560	2,089
Friday 21	765.84	32.84	12 AM - Mid	399	1,560	1,959
Saturday 22	765.86	32.87	12 AM - Mid	732	1,350	2,082
CHANGE IN STORAGE DURING THE WEEK		0.22	* SACANDAGA RIVER AT STEWARTS BRIDGE INCLUDES 350 CFS MINIMUM CONTINUOUS RELEASE			

ELEVATIONS AND CAPACITIES ON THIS DATE FOR THE PAST TEN YEARS

NO.	YEAR	ELEV.	CAPACITY	NO.	YEAR	ELEV.	CAPACITY
1	2019	769.96	37.54	6	2018	766.64	33.74
2	2014	769.51	37.02	7	2012	766.23	33.28
3	2017	766.71	33.82	8	2021	765.86	32.87
4	2020	766.70	33.80	9	2013	765.42	32.38
5	2016	766.65	33.75	10	2015	763.83	30.63

CAPACITY AT SPILLWAY CREST (EL 770.12) 37.72 B.C.F.
 CAPACITY AT LOW FLOW LINE (EL 734.12) 4.60 B.C.F.

(1) Includes dead storage below El. 734.12 ft.
 Datum: NAVD 88

 CHIEF ENGINEER

STATE OF NEW YORK
 HUDSON RIVER-BLACK RIVER REGULATING DISTRICT
INDIAN LAKE RESERVOIR OPERATION
 FOR WEEK ENDING: May 1, 2021

DATE	INDIAN LAKE RESERVOIR			INDIAN RIVER	HUDSON RIVER	
	WATER SURFACE ELEV. 12 A.M.	AVAIL. STORAGE B.C.F.	PERIODS OF RELEASE	RELEASE AVG. DAILY C.F.S.*	NEWCOMB AVG. DAILY C.F.S.	NORTH CREEK AVG. DAILY C.F.S.
Saturday 24	1,648.22	3.18	12 AM - Mid	60	400	1,720
Sunday 25	1,648.21	3.17	12 AM - Mid	60	392	1,650
Monday 26	1,648.35	3.20	12 AM - Mid	60	372	1,460
Tuesday 27	1,648.51	3.23	12 AM - Mid	60	340	1,430
Wednesday 28	1,648.61	3.24	12 AM - Mid	60	336	1,480
Thursday 29	1,648.85	3.29	12 AM - Mid	60	498	2,580
Friday 30	1,649.19	3.36	12 AM - Mid	61	916	4,330
Saturday 1	1,649.63	3.44	12 AM - Mid	61	1,740	5,830

CHANGE IN STORAGE DURING THE WEEK	0.26	* INIDAN RIVER NEAR INDIAN LAKE
-----------------------------------	------	---------------------------------

ELEVATIONS AND CAPACITIES ON THIS DATE FOR THE PAST TEN YEARS

NO.	YEAR	ELEV.	CAPACITY	NO.	YEAR	ELEV.	CAPACITY
1	2019	1,651.48	3.82	6	2021	1,649.63	3.44
2	2020	1,649.73	3.46	7	2016	1,649.61	3.44
3	2017	1,649.71	3.46	8	2012	1,649.19	3.36
4	2013	1,649.69	3.45	9	2018	1,649.01	3.32
5	2014	1,649.66	3.45	10	2015	1,648.12	3.16

CAPACITY AT SPILLWAY CREST (EL 1651.01) 3.7 B.C.F.

Datum: NAVD 88

 CHIEF ENGINEER

STATE OF NEW YORK
 HUDSON RIVER-BLACK RIVER REGULATING DISTRICT
INDIAN LAKE RESERVOIR OPERATION
 FOR WEEK ENDING: May 8, 2021

DATE	INDIAN LAKE RESERVOIR			INDIAN RIVER	HUDSON RIVER	
	WATER SURFACE ELEV. 12 A.M.	AVAIL. STORAGE B.C.F.	PERIODS OF RELEASE	RELEASE AVG. DAILY C.F.S.*	NEWCOMB AVG. DAILY C.F.S.	NORTH CREEK AVG. DAILY C.F.S.
Saturday 1	1,649.63	3.44	12 AM - Mid	61	1,740	5,830
Sunday 2	1,649.96	3.51	12 AM - Mid	61	1,810	5,140
Monday 3	1,650.14	3.54	12 AM - Mid	61	1,410	3,730
Tuesday 4	1,650.30	3.57	12 AM - Mid	174	1,080	2,960
Wednesday 5	1,650.44	3.60	12 AM - Mid	299	949	2,700
Thursday 6	1,650.48	3.61	12 AM - Mid	463	1,080	3,160
Friday 7	1,650.47	3.61	12 AM - Mid	463	960	2,910
Saturday 8	1,650.42	3.60	12 AM - Mid	463	750	2,590

CHANGE IN STORAGE DURING THE WEEK	0.16	* INIDAN RIVER NEAR INDIAN LAKE
-----------------------------------	------	---------------------------------

ELEVATIONS AND CAPACITIES ON THIS DATE FOR THE PAST TEN YEARS

NO.	YEAR	ELEV.	CAPACITY	NO.	YEAR	ELEV.	CAPACITY
1	2017	1,651.39	3.80	6	2013	1,650.31	3.58
2	2019	1,650.69	3.65	7	2012	1,650.21	3.56
3	2018	1,650.58	3.63	8	2016	1,650.14	3.54
4	2014	1,650.44	3.60	9	2020	1,650.03	3.52
5	2021	1,650.42	3.60	10	2015	1,648.72	3.27

CAPACITY AT SPILLWAY CREST (EL 1651.01) 3.7 B.C.F.

Datum: NAVD 88

 CHIEF ENGINEER

STATE OF NEW YORK
 HUDSON RIVER-BLACK RIVER REGULATING DISTRICT
INDIAN LAKE RESERVOIR OPERATION
 FOR WEEK ENDING: May 15, 2021

DATE	INDIAN LAKE RESERVOIR			INDIAN RIVER	HUDSON RIVER	
	WATER SURFACE ELEV. 12 A.M.	AVAIL. STORAGE B.C.F.	PERIODS OF RELEASE	RELEASE AVG. DAILY C.F.S.*	NEWCOMB AVG. DAILY C.F.S.	NORTH CREEK AVG. DAILY C.F.S.
Saturday 8	1,650.42	3.60	12 AM - Mid	463	750	2,590
Sunday 9	1,650.35	3.58	12 AM - Mid	462	641	2,310
Monday 10	1,650.27	3.57	12 AM - Mid	460	588	2,070
Tuesday 11	1,650.18	3.55	12 AM - Mid	389	539	1,930
Wednesday 12	1,650.09	3.53	12 AM - Mid	240	482	1,520
Thursday 13	1,650.04	3.52	12 AM - Mid	199	424	1,450
Friday 14	1,650.06	3.53	12 AM - Mid	102	373	1,110
Saturday 15	1,650.08	3.53	12 AM - Mid	102	334	1,100

CHANGE IN STORAGE DURING THE WEEK	-0.07	* INIDAN RIVER NEAR INDIAN LAKE				
-----------------------------------	-------	---------------------------------	--	--	--	--

ELEVATIONS AND CAPACITIES ON THIS DATE FOR THE PAST TEN YEARS

NO.	YEAR	ELEV.	CAPACITY	NO.	YEAR	ELEV.	CAPACITY
1	2013	1,650.81	3.68	6	2021	1,650.08	3.53
2	2019	1,650.69	3.65	7	2020	1,649.85	3.48
3	2012	1,650.38	3.59	8	2014	1,649.80	3.47
4	2016	1,650.16	3.55	9	2015	1,649.61	3.44
5	2017	1,650.11	3.54	10	2018	1,648.93	3.31

CAPACITY AT SPILLWAY CREST (EL 1651.01) 3.7 B.C.F.

Datum: NAVD 88

 CHIEF ENGINEER

STATE OF NEW YORK
 HUDSON RIVER-BLACK RIVER REGULATING DISTRICT
INDIAN LAKE RESERVOIR OPERATION
 FOR WEEK ENDING: May 22, 2021

DATE	INDIAN LAKE RESERVOIR			INDIAN RIVER	HUDSON RIVER	
	WATER SURFACE ELEV. 12 A.M.	AVAIL. STORAGE B.C.F.	PERIODS OF RELEASE	RELEASE AVG. DAILY C.F.S.*	NEWCOMB AVG. DAILY C.F.S.	NORTH CREEK AVG. DAILY C.F.S.
Saturday 15	1,650.08	3.53	12 AM - Mid	102	334	1,100
Sunday 16	1,650.08	3.53	12 AM - Mid	102	307	989
Monday 17	1,650.09	3.53	12 AM - Mid	102	280	788
Tuesday 18	1,650.10	3.53	12 AM - Mid	102	257	776
Wednesday 19	1,650.09	3.53	12 AM - Mid	102	239	624
Thursday 20	1,650.10	3.53	12 AM - Mid	102	223	716
Friday 21	1,650.07	3.53	12 AM - Mid	102	205	546
Saturday 22	1,650.08	3.53	12 AM - Mid	102	189	651

CHANGE IN STORAGE DURING THE WEEK	0.00	* INIDAN RIVER NEAR INDIAN LAKE				
-----------------------------------	------	---------------------------------	--	--	--	--

ELEVATIONS AND CAPACITIES ON THIS DATE FOR THE PAST TEN YEARS

NO.	YEAR	ELEV.	CAPACITY	NO.	YEAR	ELEV.	CAPACITY
1	2013	1,650.84	3.68	6	2019	1,650.04	3.52
2	2014	1,650.74	3.66	7	2020	1,650.02	3.52
3	2012	1,650.29	3.57	8	2017	1,649.99	3.51
4	2016	1,650.13	3.54	9	2015	1,649.89	3.49
5	2021	1,650.08	3.53	10	2018	1,648.85	3.29

CAPACITY AT SPILLWAY CREST (EL 1651.01) 3.7 B.C.F.

Datum: NAVD 88

CHIEF ENGINEER

STATE OF NEW YORK
HUDSON RIVER-BLACK RIVER REGULATING DISTRICT
STILLWATER RESERVOIR OPERATION

FOR WEEK ENDING: **May 1, 2021**

DATE	STILLWATER RESERVOIR			BEAVER RIVER		BLACK RIVER
	WATER SURFACE ELEV. 12 A.M.	AVAIL. STORAGE B.C.F.	PERIODS OF RELEASE	STILLWATER RELEASE AVG. DAILY C.F.S.	CROGHAN AVG. DAILY FLOW C.F.S.	WATERTOWN AVG. DAILY FLOW C.F.S.
Saturday 24	1,674.36	3.50	12 AM -Mid	50	258	3,210
Sunday 25	1,674.45	3.53	12 AM -Mid	50	239	3,090
Monday 26	1,674.53	3.54	12 AM -Mid	50	200	2,810
Tuesday 27	1,674.63	3.57	12 AM -Mid	50	204	2,670
Wednesday 28	1,674.74	3.60	12 AM -Mid	50	255	2,700
Thursday 29	1,674.91	3.64	12 AM -Mid	94	559	3,530
Friday 30	1,675.11	3.68	12 AM -Mid	81	829	5,490
Saturday 1	1,675.65	3.82	12 AM -Mid	50	1,350	7,800

CHANGE IN STORAGE DURING THE WEEK	0.32
-----------------------------------	------

ELEVATIONS AND CAPACITIES ON THIS DATE FOR THE PAST TEN YEARS

NO.	YEAR	ELEV.	CAPACITY	NO.	YEAR	ELEV.	CAPACITY
1	2017	1,677.73	4.35	6	2013	1,676.93	4.14
2	2012	1,677.73	4.35	7	2019	1,676.52	4.04
3	2014	1,677.65	4.33	8	2021	1,675.65	3.82
4	2016	1,677.57	4.31	9	2020	1,673.21	3.24
5	2018	1,677.12	4.19	10	2015	1,671.93	2.95

CAPACITY AT SPILLWAY CREST (EL 1677.19) 4.213 B.C.F.
CAPACITY AT LOW FLOW LINE (EL 1650.69) 0.10 B.C.F.

Datum: NAVD 88

CHIEF ENGINEER

STATE OF NEW YORK
HUDSON RIVER-BLACK RIVER REGULATING DISTRICT
STILLWATER RESERVOIR OPERATION

FOR WEEK ENDING: **May 8, 2021**

DATE	STILLWATER RESERVOIR			BEAVER RIVER		BLACK RIVER
	WATER SURFACE ELEV. 12 A.M.	AVAIL. STORAGE B.C.F.	PERIODS OF RELEASE	STILLWATER RELEASE AVG. DAILY C.F.S.	CROGHAN AVG. DAILY FLOW C.F.S.	WATERTOWN AVG. DAILY FLOW C.F.S.
Saturday 1	1,675.65	3.82	12 AM -Mid	50	1,350	7,800
Sunday 2	1,676.13	3.94	12 AM -Mid	50	1,180	8,810
Monday 3	1,676.41	4.01	12 AM -Mid	50	719	8,850
Tuesday 4	1,676.64	4.07	12 AM -Mid	50	371	7,930
Wednesday 5	1,676.82	4.11	12 AM -Mid	50	405	6,720
Thursday 6	1,677.04	4.17	12 AM -Mid	50	377	5,790
Friday 7	1,677.22	4.22	12 AM -Mid	50	365	5,260
Saturday 8	1,677.38	4.26	12 AM -Mid	50	376	5,010
CHANGE IN STORAGE DURING THE WEEK		0.44				

ELEVATIONS AND CAPACITIES ON THIS DATE FOR THE PAST TEN YEARS

NO.	YEAR	ELEV.	CAPACITY	NO.	YEAR	ELEV.	CAPACITY
1	2017	1,679.26	4.77	6	2021	1,677.38	4.26
2	2014	1,678.53	4.56	7	2019	1,677.36	4.25
3	2012	1,678.47	4.55	8	2013	1,677.36	4.25
4	2018	1,678.34	4.51	9	2020	1,673.52	3.31
5	2016	1,677.76	4.36	10	2015	1,672.44	3.07

CAPACITY AT SPILLWAY CREST (EL 1677.19) 4.213 B.C.F.
CAPACITY AT LOW FLOW LINE (EL 1650.69) 0.10 B.C.F.

Datum: NAVD 88

CHIEF ENGINEER

STATE OF NEW YORK
HUDSON RIVER-BLACK RIVER REGULATING DISTRICT
STILLWATER RESERVOIR OPERATION

FOR WEEK ENDING: **May 15, 2021**

DATE	STILLWATER RESERVOIR			BEAVER RIVER		BLACK RIVER
	WATER SURFACE ELEV. 12 A.M.	AVAIL. STORAGE B.C.F.	PERIODS OF RELEASE	STILLWATER RELEASE AVG. DAILY C.F.S.	CROGHAN AVG. DAILY FLOW C.F.S.	WATERTOWN AVG. DAILY FLOW C.F.S.
Saturday 8	1,677.38	4.26	12 AM -Mid	50	376	5,010
Sunday 9	1,677.50	4.29	12 AM -Mid	50	399	5,360
Monday 10	1,677.64	4.33	12 AM -Mid	50	328	5,120
Tuesday 11	1,677.73	4.35	12 AM -Mid	50	345	4,620
Wednesday 12	1,677.79	4.37	12 AM -Mid	50	360	3,960
Thursday 13	1,677.90	4.40	12 AM -Mid	50	277	3,450
Friday 14	1,677.96	4.41	12 AM -Mid	50	244	2,990
Saturday 15	1,678.02	4.43	12 AM -Mid	50	217	2,600

CHANGE IN STORAGE DURING THE WEEK	0.17
-----------------------------------	------

ELEVATIONS AND CAPACITIES ON THIS DATE FOR THE PAST TEN YEARS

NO.	YEAR	ELEV.	CAPACITY	NO.	YEAR	ELEV.	CAPACITY
1	2017	1,679.23	4.76	6	2016	1,677.77	4.36
2	2012	1,678.65	4.60	7	2018	1,677.55	4.30
3	2019	1,678.54	4.57	8	2013	1,677.42	4.27
4	2014	1,678.49	4.56	9	2020	1,673.97	3.41
5	2021	1,678.02	4.43	10	2015	1,672.83	3.15

CAPACITY AT SPILLWAY CREST (EL 1677.19) 4.213 B.C.F.
CAPACITY AT LOW FLOW LINE (EL 1650.69) 0.10 B.C.F.

Datum: NAVD 88

CHIEF ENGINEER

STATE OF NEW YORK
 HUDSON RIVER-BLACK RIVER REGULATING DISTRICT
STILLWATER RESERVOIR OPERATION
 FOR WEEK ENDING: **May 22, 2021**

DATE	STILLWATER RESERVOIR			BEAVER RIVER		BLACK RIVER
	WATER SURFACE ELEV. 12 A.M.	AVAIL. STORAGE B.C.F.	PERIODS OF RELEASE	STILLWATER RELEASE AVG. DAILY C.F.S.	CROGHAN AVG. DAILY FLOW C.F.S.	WATERTOWN AVG. DAILY FLOW C.F.S.
Saturday 15	1,678.02	4.43	12 AM -Mid	50	217	2,600
Sunday 16	1,678.06	4.44	12 AM -Mid	50	206	2,260
Monday 17	1,678.12	4.45	12 AM -Mid	50	161	2,210
Tuesday 18	1,678.15	4.46	12 AM -Mid	50	145	2,000
Wednesday 19	1,678.18	4.47	12 AM -Mid	50	145	1,800
Thursday 20	1,678.22	4.48	12 AM -Mid	50	141	1,630
Friday 21	1,678.24	4.49	12 AM -Mid	50	128	1,550
Saturday 22	1,678.26	4.49	12 AM -Mid	50	125	1,380

CHANGE IN STORAGE DURING THE WEEK	0.07					
-----------------------------------	------	--	--	--	--	--

ELEVATIONS AND CAPACITIES ON THIS DATE FOR THE PAST TEN YEARS

NO.	YEAR	ELEV.	CAPACITY	NO.	YEAR	ELEV.	CAPACITY
1	2019	1,679.35	4.79	6	2016	1,677.71	4.35
2	2014	1,678.95	4.68	7	2013	1,677.52	4.30
3	2017	1,678.56	4.57	8	2018	1,677.28	4.23
4	2012	1,678.36	4.52	9	2020	1,674.61	3.56
5	2021	1,678.26	4.49	10	2015	1,673.11	3.21

CAPACITY AT SPILLWAY CREST (EL 1677.19) 4.213 B.C.F.
 CAPACITY AT LOW FLOW LINE (EL 1650.69) 0.10 B.C.F.

Datum: NAVD 88

 CHIEF ENGINEER

STATE OF NEW YORK
HUDSON RIVER-BLACK RIVER REGULATING DISTRICT
FULTON CHAIN RESERVOIR OPERATION

FOR WEEK ENDING: May 1, 2021

DATE	OLD FORGE RESERVOIR			SIXTH LAKE RESERVOIR		
	WATER SURFACE ELEV. 12 A.M.	AVAIL. STORAGE B.C.F.	RELEASE AVG. DAILY C.F.S.	WATER SURFACE ELEV. 12 A.M.	AVAIL. STORAGE B.C.F.	RELEASE AVG. DAILY C.F.S.
Saturday 24	1,705.67	0.747	4	1,783.84	0.234	5
Sunday 25	1,705.71	0.753	4	1,783.90	0.235	5
Monday 26	1,705.73	0.755	4	1,783.95	0.237	5
Tuesday 27	1,705.75	0.758	4	1,783.97	0.238	5
Wednesday 28	1,705.84	0.768	4	1,784.05	0.240	5
Thursday 29	1,705.93	0.781	4	1,784.22	0.245	5
Friday 30	1,706.02	0.792	4	1,784.42	0.252	5
Saturday 1	1,706.22	0.820	4	1,784.82	0.264	5
CHANGE IN STORAGE		0.073			0.031	

ELEVATIONS AND CAPACITIES ON THIS DATE FOR THE PAST FIVE YEARS

OLD FORGE RESERVOIR				SIXTH LAKE RESERVOIR			
NO.	YEAR	ELEV.	CAPACITY	NO.	YEAR	ELEV.	CAPACITY
1	2017	1,706.43	0.847	1	2019	1,785.10	0.273
2	2019	1,706.32	0.832	2	2021	1,784.82	0.264
3	2021	1,706.22	0.820	3	2017	1,784.71	0.261
4	2020	1,705.80	0.764	4	2020	1,783.57	0.225
5	2018	1,705.01	0.662	5	2018	1,783.25	0.215

OLD FORGE CAPACITY AT SPILLWAY CREST (EL 1706.99) 0.924 B.C.F.
SIXTH LAKE CAPACITY AT SPILLWAY CREST (EL 1785.83) 0.297 B.C.F.

Datum: NAVD 88

CHIEF ENGINEER

STATE OF NEW YORK
HUDSON RIVER-BLACK RIVER REGULATING DISTRICT
FULTON CHAIN RESERVOIR OPERATION

FOR WEEK ENDING: **May 8, 2021**

DATE	OLD FORGE RESERVOIR			SIXTH LAKE RESERVOIR		
	WATER SURFACE ELEV. 12 A.M.	AVAIL. STORAGE B.C.F.	RELEASE AVG. DAILY C.F.S.	WATER SURFACE ELEV. 12 A.M.	AVAIL. STORAGE B.C.F.	RELEASE AVG. DAILY C.F.S.
Saturday 1	1,706.22	0.820	4	1,784.82	0.264	5
Sunday 2	1,706.38	0.842	4	1,785.07	0.272	5
Monday 3	1,706.47	0.854	4	1,785.21	0.277	5
Tuesday 4	1,706.54	0.862	17	1,785.33	0.281	5
Wednesday 5	1,706.57	0.866	24	1,785.42	0.283	5
Thursday 6	1,706.62	0.873	24	1,785.54	0.287	5
Friday 7	1,706.68	0.882	24	1,785.63	0.290	11
Saturday 8	1,706.72	0.888	24	1,785.70	0.292	15
CHANGE IN STORAGE		0.068			0.028	

ELEVATIONS AND CAPACITIES ON THIS DATE FOR THE PAST FIVE YEARS

OLD FORGE RESERVOIR				SIXTH LAKE RESERVOIR			
NO.	YEAR	ELEV.	CAPACITY	NO.	YEAR	ELEV.	CAPACITY
1	2019	1,706.76	0.893	1	2019	1,785.87	0.298
2	2021	1,706.72	0.888	2	2021	1,785.70	0.292
3	2017	1,706.64	0.876	3	2017	1,785.69	0.292
4	2020	1,706.00	0.790	4	2018	1,784.38	0.250
5	2018	1,705.52	0.727	5	2020	1,783.80	0.232

OLD FORGE CAPACITY AT SPILLWAY CREST (EL 1706.99) 0.924 B.C.F.
SIXTH LAKE CAPACITY AT SPILLWAY CREST (EL 1785.83) 0.297 B.C.F.

Datum: NAVD 88

CHIEF ENGINEER

STATE OF NEW YORK
HUDSON RIVER-BLACK RIVER REGULATING DISTRICT
FULTON CHAIN RESERVOIR OPERATION

FOR WEEK ENDING: [May 15, 2021](#)

DATE	OLD FORGE RESERVOIR			SIXTH LAKE RESERVOIR		
	WATER SURFACE ELEV. 12 A.M.	AVAIL. STORAGE B.C.F.	RELEASE AVG. DAILY C.F.S.	WATER SURFACE ELEV. 12 A.M.	AVAIL. STORAGE B.C.F.	RELEASE AVG. DAILY C.F.S.
Saturday 8	1,706.72	0.888	24	1,785.70	0.292	15
Sunday 9	1,706.74	0.890	24	1,785.75	0.294	15
Monday 10	1,706.77	0.893	24	1,785.79	0.295	15
Tuesday 11	1,706.76	0.893	24	1,785.81	0.296	15
Wednesday 12	1,706.77	0.893	24	1,785.83	0.297	15
Thursday 13	1,706.80	0.897	24	1,785.86	0.298	15
Friday 14	1,706.80	0.897	24	1,785.88	0.298	15
Saturday 15	1,706.82	0.900	24	1,785.89	0.299	15
CHANGE IN STORAGE		0.012			0.006	

ELEVATIONS AND CAPACITIES ON THIS DATE FOR THE PAST FIVE YEARS

OLD FORGE RESERVOIR				SIXTH LAKE RESERVOIR			
NO.	YEAR	ELEV.	CAPACITY	NO.	YEAR	ELEV.	CAPACITY
1	2019	1,707.02	0.927	1	2019	1,786.09	0.305
2	2021	1,706.82	0.900	2	2017	1,785.99	0.302
3	2017	1,706.76	0.893	3	2021	1,785.89	0.299
4	2020	1,706.25	0.824	4	2018	1,784.86	0.266
5	2018	1,705.81	0.764	5	2020	1,783.99	0.238

OLD FORGE CAPACITY AT SPILLWAY CREST (EL 1706.99) 0.924 B.C.F.
SIXTH LAKE CAPACITY AT SPILLWAY CREST (EL 1785.83) 0.297 B.C.F.

Datum: NAVD 88

CHIEF ENGINEER

STATE OF NEW YORK
HUDSON RIVER-BLACK RIVER REGULATING DISTRICT
FULTON CHAIN RESERVOIR OPERATION

FOR WEEK ENDING: [May 22, 2021](#)

DATE	OLD FORGE RESERVOIR			SIXTH LAKE RESERVOIR		
	WATER SURFACE ELEV. 12 A.M.	AVAIL. STORAGE B.C.F.	RELEASE AVG. DAILY C.F.S.	WATER SURFACE ELEV. 12 A.M.	AVAIL. STORAGE B.C.F.	RELEASE AVG. DAILY C.F.S.
Saturday 15	1,706.82	0.900	24	1,785.89	0.299	15
Sunday 16	1,706.82	0.900	24	1,785.90	0.299	15
Monday 17	1,706.82	0.900	24	1,785.92	0.299	15
Tuesday 18	1,706.83	0.901	24	1,785.92	0.299	15
Wednesday 19	1,706.83	0.901	24	1,785.92	0.299	15
Thursday 20	1,706.84	0.903	24	1,785.92	0.299	15
Friday 21	1,706.83	0.901	24	1,785.92	0.299	15
Saturday 22	1,706.84	0.903	24	1,785.91	0.299	15
CHANGE IN STORAGE		0.003			0.001	

ELEVATIONS AND CAPACITIES ON THIS DATE FOR THE PAST FIVE YEARS

OLD FORGE RESERVOIR				SIXTH LAKE RESERVOIR			
NO.	YEAR	ELEV.	CAPACITY	NO.	YEAR	ELEV.	CAPACITY
1	2017	1,706.95	0.919	1	2019	1,786.16	0.307
2	2021	1,706.84	0.903	2	2021	1,785.91	0.299
3	2019	1,706.80	0.897	3	2017	1,785.84	0.297
4	2020	1,706.50	0.858	4	2018	1,785.31	0.280
5	2018	1,706.13	0.806	5	2020	1,784.24	0.246

OLD FORGE CAPACITY AT SPILLWAY CREST (EL 1706.99) 0.924 B.C.F.
SIXTH LAKE CAPACITY AT SPILLWAY CREST (EL 1785.83) 0.297 B.C.F.

Datum: NAVD 88

CHIEF ENGINEER