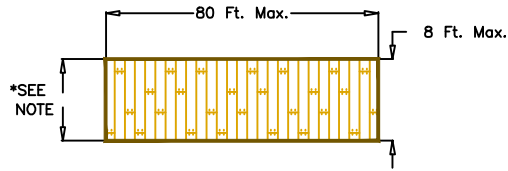
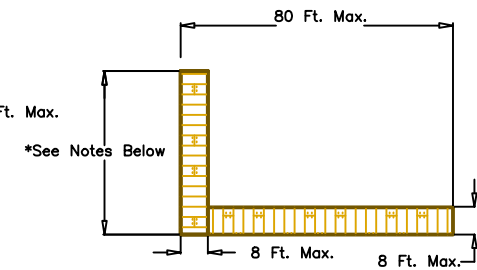
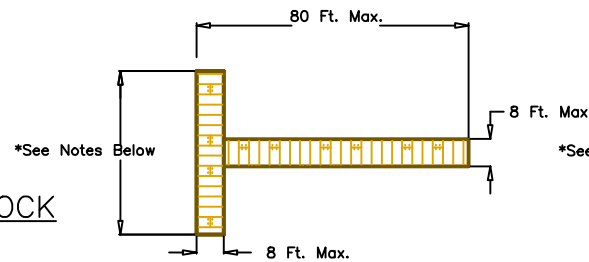


ALLOWABLE FLOATABLE OR ROLLING DOCK CONFIGURATIONS ON ACCESS PERMIT AREAS GREATER THAN 20 FEET IN WIDTH



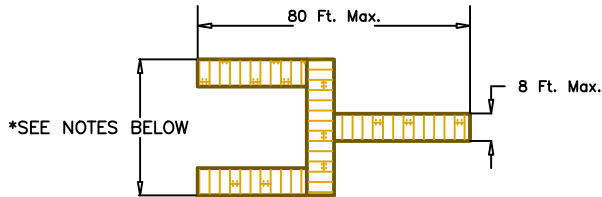
OPTION 1; FLOATABLE OR ROLLING DOCK

- *SEE NOTES FOR REQUIREMENTS.



OPTION 2; FLOATABLE OR ROLLING DOCK WITH TEE OR "L"

- WIDTH BETWEEN ACCESS PERMIT LINES 21 Ft. TO 29 Ft., 12 Ft. DOCK WIDTH MAXIMUM.
- WIDTH BETWEEN ACCESS PERMIT LINES 30 Ft. TO 49 Ft., 20 Ft. DOCK WIDTH MAXIMUM.
- WIDTH BETWEEN ACCESS PERMIT LINES 50 Ft. OR GREATER, 30 Ft. DOCK WIDTH MAXIMUM.

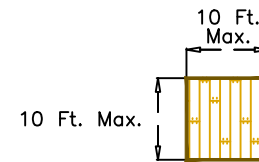


OPTION 3 FLOATABLE OR ROLLING DOCK WITH FINGERS

- WIDTH BETWEEN ACCESS PERMIT LINES 29 Ft. OR LESS NO "U" SHAPED CONFIGURATIONS ALLOWED.
- WIDTH BETWEEN ACCESS PERMIT LINES 30 Ft. TO 49 Ft. 20 Ft. DOCK WIDTH MAXIMUM.
- WIDTH BETWEEN ACCESS PERMIT LINES 50 Ft. OR GREATER, 30 Ft. DOCK WIDTH MAXIMUM.
- ALL SECTIONS 8 Ft. WIDE MAXIMUM.


*NOTES:

- ALL DOCK SYSTEMS MUST NOT EXCEED 80 FT. IN LENGTH.
- NO FLOATING OBJECT SHALL BE PLACED WITHIN 5 FT. OF EITHER PERMIT ACCESS LINE AS IT EXTENDS OUT INTO THE WATER.
- ALL DOCK SECTIONS MUST NOT EXCEED 8 FT. IN WIDTH AS PER A.P.A. LIMITATIONS EFFECTIVE 6/1/2003.
- SUBMIT A SKETCH OR DRAWING WITH DIMENSIONS OF YOUR PROPOSED DOCK.
- ALL DOCK SECTIONS MUST HAVE NAME AND PERMIT NUMBER OF OWNER AFFIXED TO THEM.
- DOCK SECTIONS FOR THE MOORING OF PERSONAL WATERCRAFT ARE ALLOWED BUT MUST CONFORM TO MAXIMUM DOCK WIDTHS AS SHOWN.



SWIM FLOAT

- MAXIMUM ALLOWABLE DIMENSION 10 Ft. X 10 Ft.
- ALLOWABLE ONLY ON PERMIT AREAS GREATER THAN 20 Ft. IN WIDTH.

 HUDSON RIVER - BLACK RIVER REGULATING DISTRICT	HUDSON-RIVER BLACK RIVER REGULATING DISTRICT GREAT SACANDAGA LAKE OFFICE MAYFIELD, NEW YORK
	ALLOWABLE FLOATABLE DOCK CONFIGURATIONS FOR GREAT SACANDAGA LAKE
	DATE: 03-26-2020 SCALE: NONE